

Drain: STANFORD BAUGHMAN
Improvement: _____
Operator: J. LIVINGSTON
Date: 10-14-03

GIS Drain Input Checklist

- Digitize & Attribute Tile Drains N/A
- Digitize & Attribute Storm Drains N/A
- Digitize & Attribute SSD N/A
- Digitize & Attribute Open Ditch JWJ
- Sum drain lengths & Validate JWJ
- Enter Improvements into Posse N/A
- Enter Drain Age into Posse JWJ
- Sum drain length for Watershed in Posse JWJ
- Stamp Plans JWJ
- Pull Source Documents for Scanning JWJ

QC'd summary 11-21-2003 slm ✓



SURVEYOR'S OFFICE

Hamilton County

Kenton C. Ward, Surveyor

776-9626

Noblesville, Ind. 46060 September 4, 1985

TO: Hamilton County Drainage Board

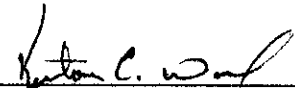
RE: Stanford Baughm Drain

Attached is a drain petition, drainage shed map and an assessment roll for the extention of the Stanford Baughm Drain into Hamilton County. The petition was filed by the Hamilton County Commissioners for Highway Drainage purposes.


The recent reconstruction of the Baughm Drain by Madison County entered Hamilton County by 3000 feet. This was done with the permission of the Hamilton County property owners, without assessing property within Hamilton County. Checking with Madison County there is no plan or profile for this portion of the drain . Madison County has also taken the position that this portion of the drain will not be made a regulated drain nor maintained by them. The Hamilton County Commissioners feel that since this drain has been reconstructed it should be made a regulated drain and placed on a maintenance program. With 343.58 acres involved, which at a \$2.00 per acre assessment, \$10.00 minimum the yearly assesement would be \$743.90 per year.

I recommend that a hearing be held for this drain on November 12, 1985.

KCW/no


Kenton C. Ward
Hamilton County Surveyor

FILED
SEP 9 1985

HAMILTON COUNTY DRAINAGE BOARD

SECRETARY

IN THE MATTER OF THE)
HAMILTON COUNTY DRAINAGE)
BOARD)

Comes now the Board of Commissioners of the County of Hamilton,
who petition the Hamilton County Drainage Board as follows:

1. They are the duly elected Board of Commissioners of
Hamilton County, Indiana.

2. That in that capacity they are responsible for the
drainage of public highways.

3. That they now desire a regulated drain be established in
Wayne Township which involves 156th Street, Atlantic Road, and
various areas surrounding the road in the drainage shed.

4. The names and addresses of each owner affected by the
proposed public drainage are attached hereto, made a part hereof,
and marked Exhibit "A", which area of land involved in the proposed
drainage area is located in Sections 8 and 17, Township 18 North,
Range 6 East, Hamilton County, Indiana.

5. No other public lands or owners are located in the area
which would affect improvement.

6. That the general route of the proposed drain is shown in
the attached plan which is marked Exhibit "B" and made a part
hereof.

7. That in the opinion of the Petitioner, the costs, damages,
and expenses of the proposed improvement will be less than the
benefits which will result to the owners of the land to be benefited
thereby.

8. That in the opinion of the Petitioner, the proposed
improvement will benefit a public highway in Hamilton County,
Indiana.

9. That the name of the attorney representing Petitioner in
the Drainage Petition is Adler & Tudor, 53 North Sixth Street,
Noblesville, Indiana.

10. That Petitioner shall pay the cost of notice and all legal
costs if the Petition is dismissed.

11. Petitioner shall post a bond, if required, to pay the cost of notice and all legal costs in case the improvement is not established.

Respectfully submitted,
Board of Commissioners of
The County of Hamilton

By: Jere Roudebush
Jere Roudebush, President

By: Phil Henderson
Phil Henderson

By: George Stevens
George Stevens

Dated: Sept. 3, 1985

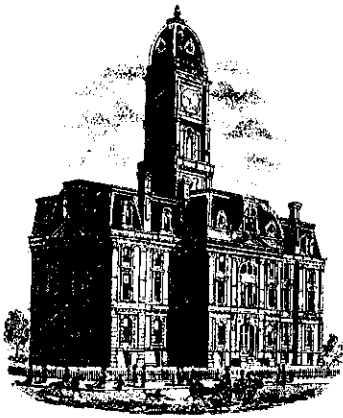
Attest:
Polly Pearce
Auditor of Hamilton County

FILED

SEP 3 1985

HAMILTON COUNTY DRAINAGE BOARD

Nancy Ellen Oldham
SECRETARY



SURVEYOR'S OFFICE

Hamilton County

Kenton C. Ward, Surveyor

776-9626

Noblesville, Ind. 46060 July 10, 1985

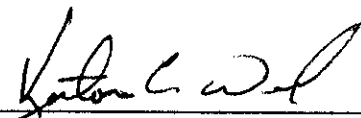
TO: Hamilton County Commissioners

RE: Stanford Baughm Drain

The recent reconstruction of the Baughm Drain by Madison County entered Hamilton County by 300 feet. This was done with the permission of the Hamilton County property owners, without assessing property within Hamilton County. Checking with Madison County there is no plan for this section of the drain. Madison County has also taken the position that this portion of the drain will not be made a regulated drain nor maintained by them.

I believe that since this drain has been reconstructed it should be made a regulated drain and placed on a maintenance program. Attached is a drainage shed map and assessment roll for the proposed drain. There is 343.58 acres involved, which at a \$2.00 per acre assessment, \$10.00 minimum would be \$743.30 per year.

I recommend that the Commissioners petition for this drain for highway drainage purposes.



 Kenton C. Ward
 Hamilton County Surveyor

KCW/no

FILED

SEP 9 1985

HAMILTON COUNTY DRAINAGE BOARD




SURVEYOR'S OFFICE
Hamilton County

Kenton C. Ward, Surveyor

776-9626

Noblesville, Ind. 46060 June 7, 1985

To: Hamilton County Drainage Board

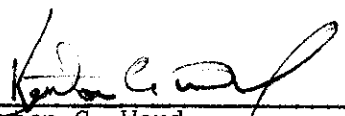
Re: Stanford Baughm Drain

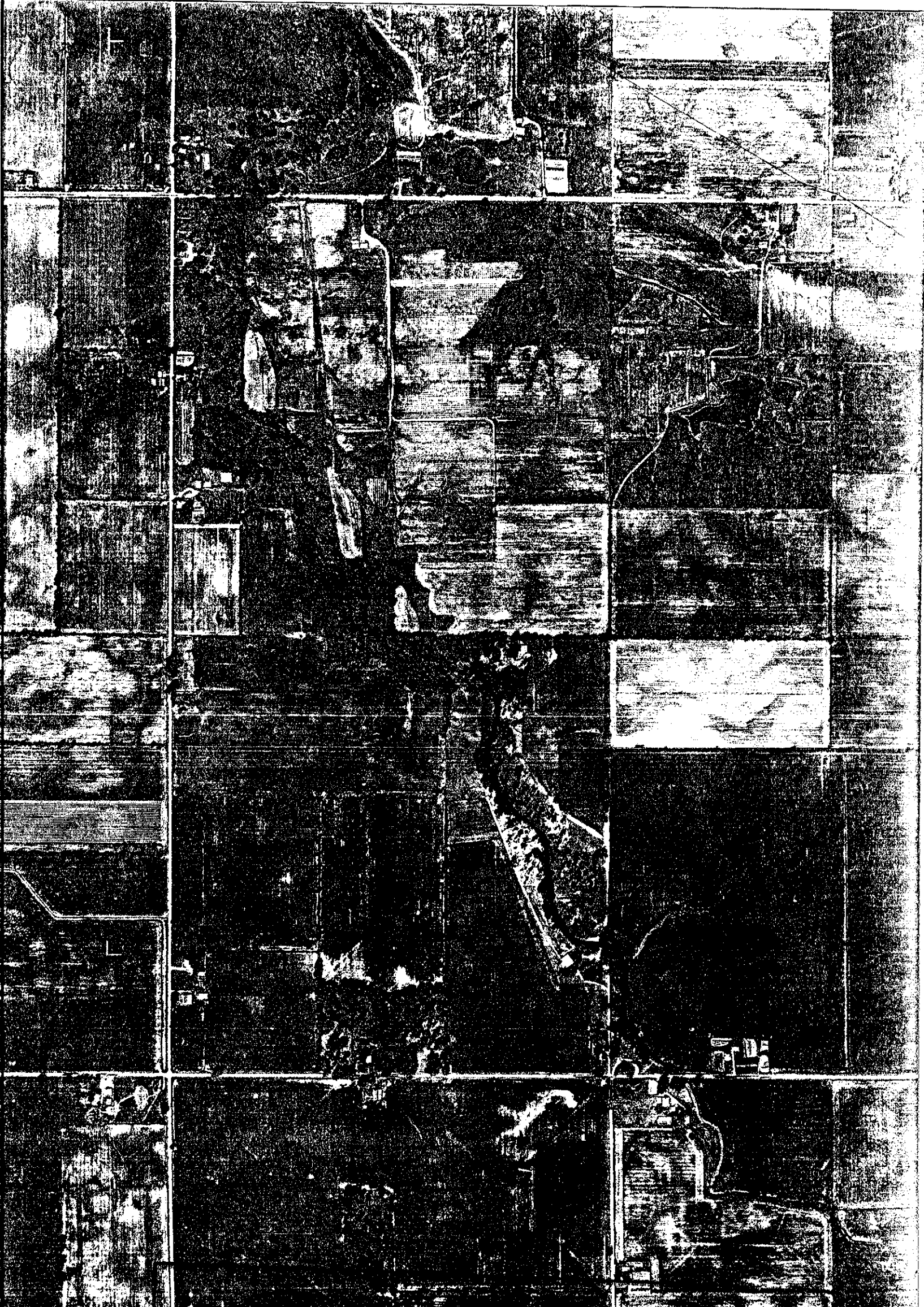
Recently the Madison County Drainage Board reconstructed a portion of Mud Creek in Hamilton County as the Stanford Baughm Drain. This was done by contacting the landowners in Hamilton County and receiving their permission. Hamilton County landowners were not assessed for this work.

The total length of the drain in Madison County is 28,600 feet with 6,018.455 acres assessed. In Hamilton County 3000 feet was reconstructed with 343.58 acres involved.

At this time I have asked the Madison County Drainage Board to state their preference as to how maintenance should be done. I have suggested two methods. First, both counties maintain the drain separately and second, that Hamilton County waive their rights to a Joint Board and have Madison County maintain the entire drain.

Nancy Ellen Odham
KCW/jh


Kenton C. Ward,
Hamilton County Surveyor



This information was gathered for input into the Hamilton County Geographical Information System. This document is considered an official record of the GIS.

Entry Date: 10-14-03

Entered by: [Signature]

EXHIBIT "B"



SURVEYOR'S OFFICE

Hamilton County

Kenton C. Ward, Surveyor

Phone (317) 776-8495

Fax (317) 776-9628

Suite 188

*One Hamilton County Square
Noblesville, Indiana 46060-2230*

June 8, 2006

TO: Hamilton County Drainage Board

RE: Mud Creek / Sand Creek Drainage Area, Stanford Baughm Drain Arm

Upon Review of the drainage sheds I believe that the Stanford Baughm Drain should be made an arm to the Mud Creek / Sand Creek Drainage Area. I recommend this action as the Stanford Baughm Drain is the upper watershed for the Mud Creek / Sand Creek Drainage Area in Hamilton County. This would also avoid a double assessment on the tracts currently assessed for the Stanford Baughm Drain when the remainder of the Mud Creek / Sand Creek Drainage Area is assessed for maintenance.

On November 12, 1985 the Board held a hearing to establish the Drain maintenance assessment for the Stanford Baughm Drain (See Surveyor's Report dated September 4, 1985, Drainage Board Minutes Book 2, Pages 90-91). At present the Stanford Baughm Drain maintenance assessment affects 344.06 acres and zero lots. The rate of assessment for the drain was set at \$2.00 per acre with a \$10.00 minimum. This rate collects \$757.82 annually and the balance within the fund is \$3,941.11. Collections for the drain were stopped in 2006.

The current maintenance assessment would increase as per the rates set for the Mud Creek / Sand Creek Drainage Area which are as follows:

1. Maintenance assessment for roads and streets be set at \$10.00 per acre.
2. Maintenance assessment for agricultural tracts be set at \$3.00 per acre and \$15.00 minimum.
3. Maintenance assessment for non-platted residential tracts be set at \$3.00 per acre and \$15.00 minimum.

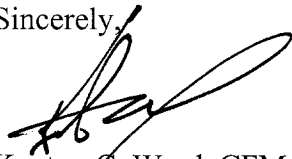
4. Maintenance assessment for commercial, institutional and multi-family residential tracts be set at \$10.00 per acre with a \$75.00 minimum.
5. Maintenance assessment for platted lots in subdivisions whose drainage systems will not be part of the regulated drain shall be set at \$35.00 per lot/minimum. Common areas within non-regulated drain subdivisions shall be assessed at \$5.00 per acre with a \$35.00 minimum.
6. Maintenance assessment for platted lots within subdivisions whose drainage system will be part of the regulated drain shall be set at \$65.00 per lot/minimum. Common areas within the regulated drain subdivisions shall be set at \$10.00 per acre with a \$65.00 minimum.

The Board has two choices as to how the current balance for the Baughm Drain is handled.

- A. Combining the current balances by:
 1. Transferring the balance of the Stanford Baughm Drain fund into the Mud Creek / Sand Creek fund.
 2. All future maintenance work on the Baughm Drain should be paid from the Mud Creek / Sand Creek fund.
- B. Keep the fund separate by:
 1. Keep funds separate and expend funds needed for maintenance in the length of Mud Creek covered by the current Baughm Drain.
 2. Future assessments for the drainage area of the Baughm drain be made into the Mud Creek/ Sand Creek fund. No further collections for the Baughm fund.

I recommend that the Board set a hearing for this consolidation for August 28, 2006.

Sincerely,



Kenton C. Ward, CFM
Hamilton County Surveyor

KCW/llm

FINDINGS AND ORDER

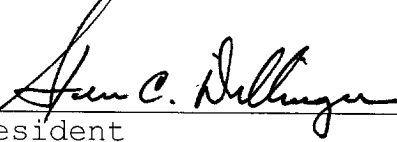
CONCERNING THE MAINTENANCE OF THE

Mud Creek/Sand Creek Drainage Area, Stanford Baughm Drain Arm

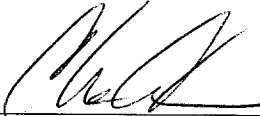
On this **28th day of August 2006**, the Hamilton County Drainage Board has held a hearing on the Maintenance Report and Schedule of Assessments of the **Mud Creek/Sand Creek Drainage Area, Stanford Baughm Drain Arm**.

Evidence has been heard. Objections were presented and considered. The Board then adopted the original/amended Schedule of Assessments. The Board now finds that the annual maintenance assessment will be less than the benefits to the landowners and issues this order declaring that this Maintenance Fund be established.


HAMILTON COUNTY DRAINAGE BOARD



President



Member



Member

Attest: 